



PARCC Performance Report Northern Highlands BOE Meeting

Dr. Brad Siegel, Director of Curriculum, Instruction, and
Assessment
September 5, 2017



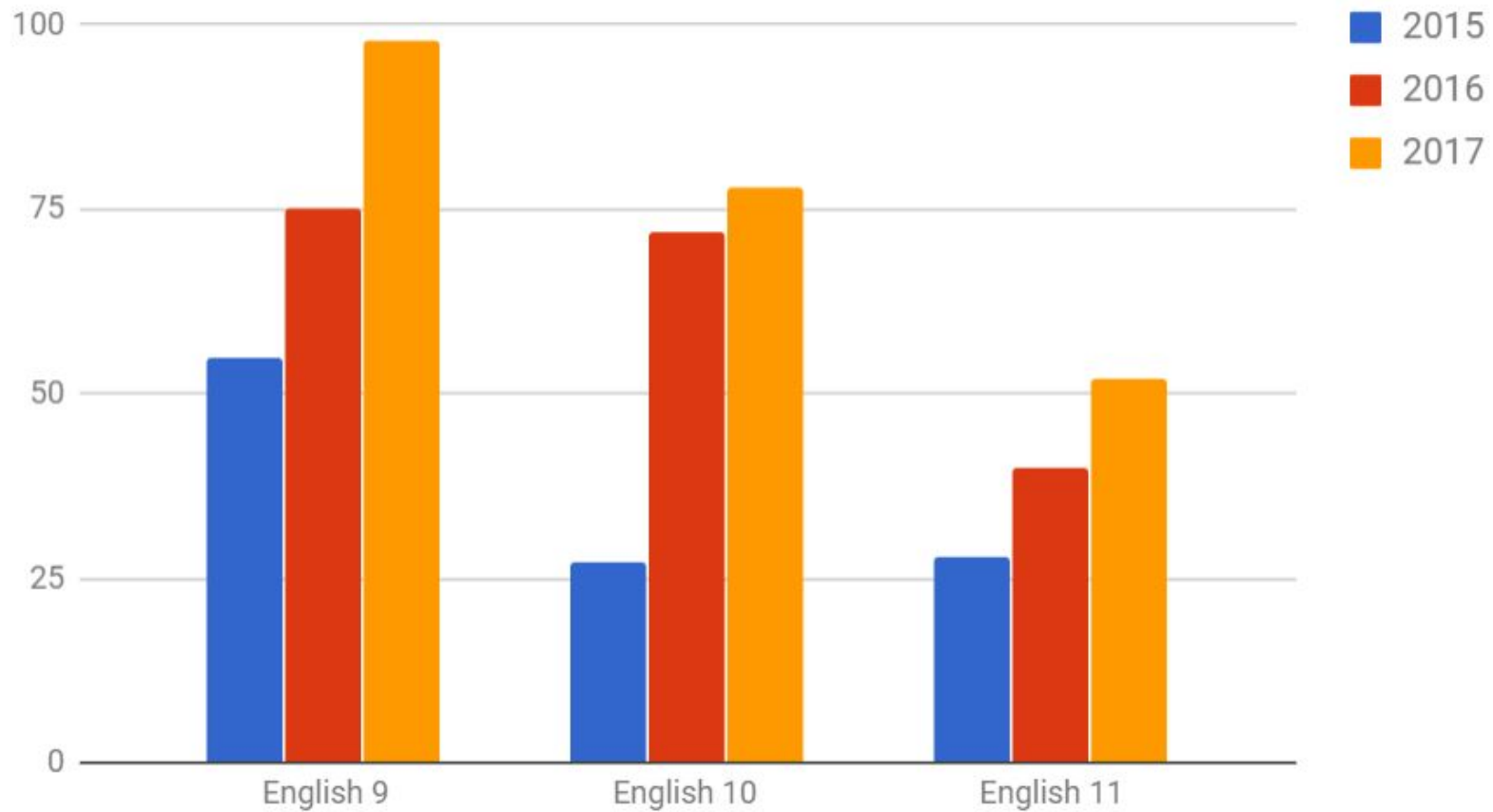
Year 3 PARCC Snapshot

- ❑ State trend of steady growth in scores and participation consistent at NH.
- ❑ PARCC is becoming a high stakes test for NH students in 2017-18.
- ❑ The district has more specific student data, and we are taking active measures to use the data to inform our program.

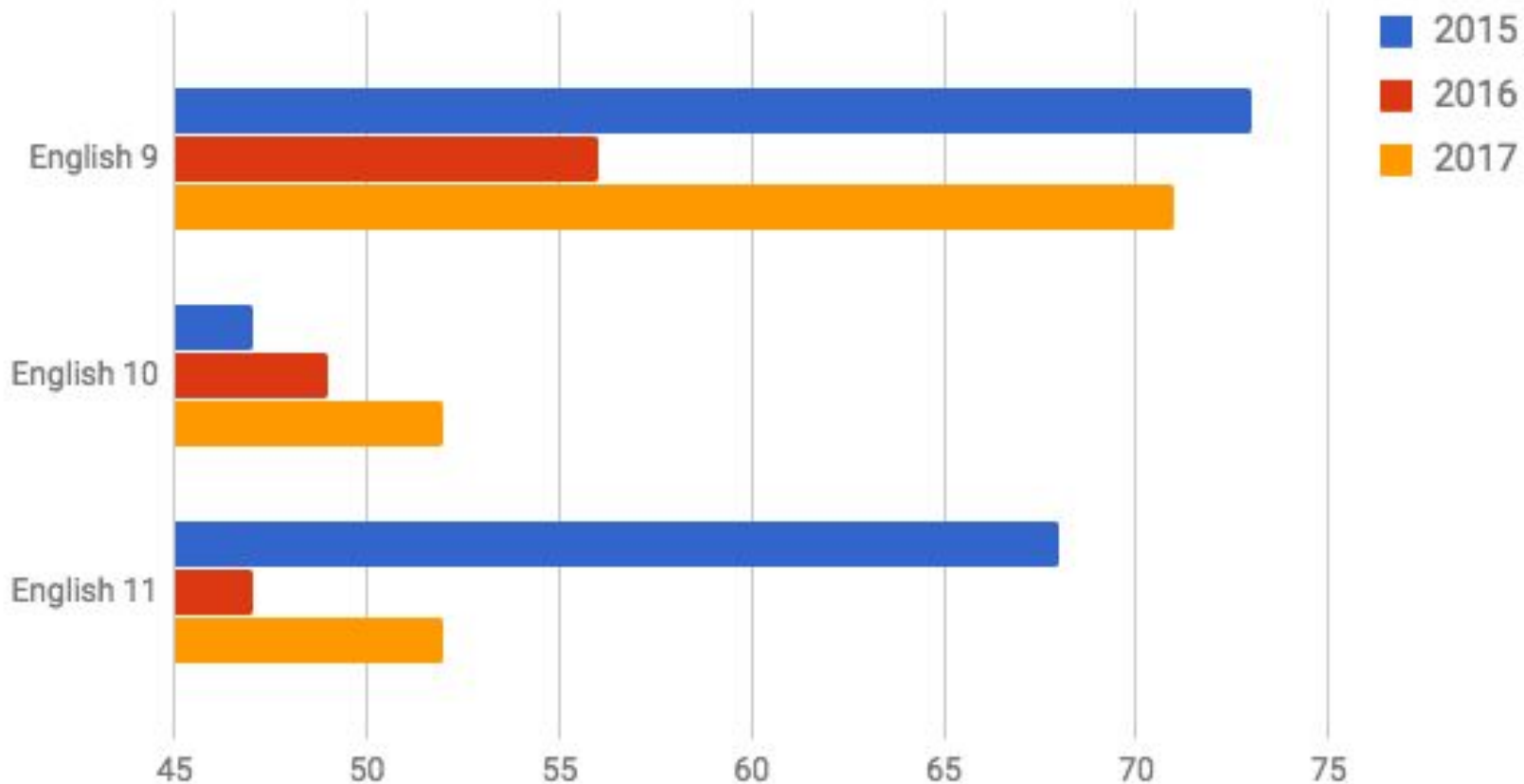
English-Language Arts

Course	Valid Scores	Avg. Score	Level 1	Level 2	Level 3	Level 4	Level 5	% 4 or Higher
English 9	333	768	2.4% (8)	6.0% (20)	20.7% (69)	44.7% (149)	26.1% (87)	70.9% (236)
English 10	248	748	20.6% (51)	10.5% (26)	17.3% (43)	32.7% (81)	19.0% (47)	51.6% (128)
English 11	178	745	15.7% (28)	14.6% (26)	18.0% (32)	37.6% (67)	14.0% (25)	51.7% (92)

PARTICIPATION RATE



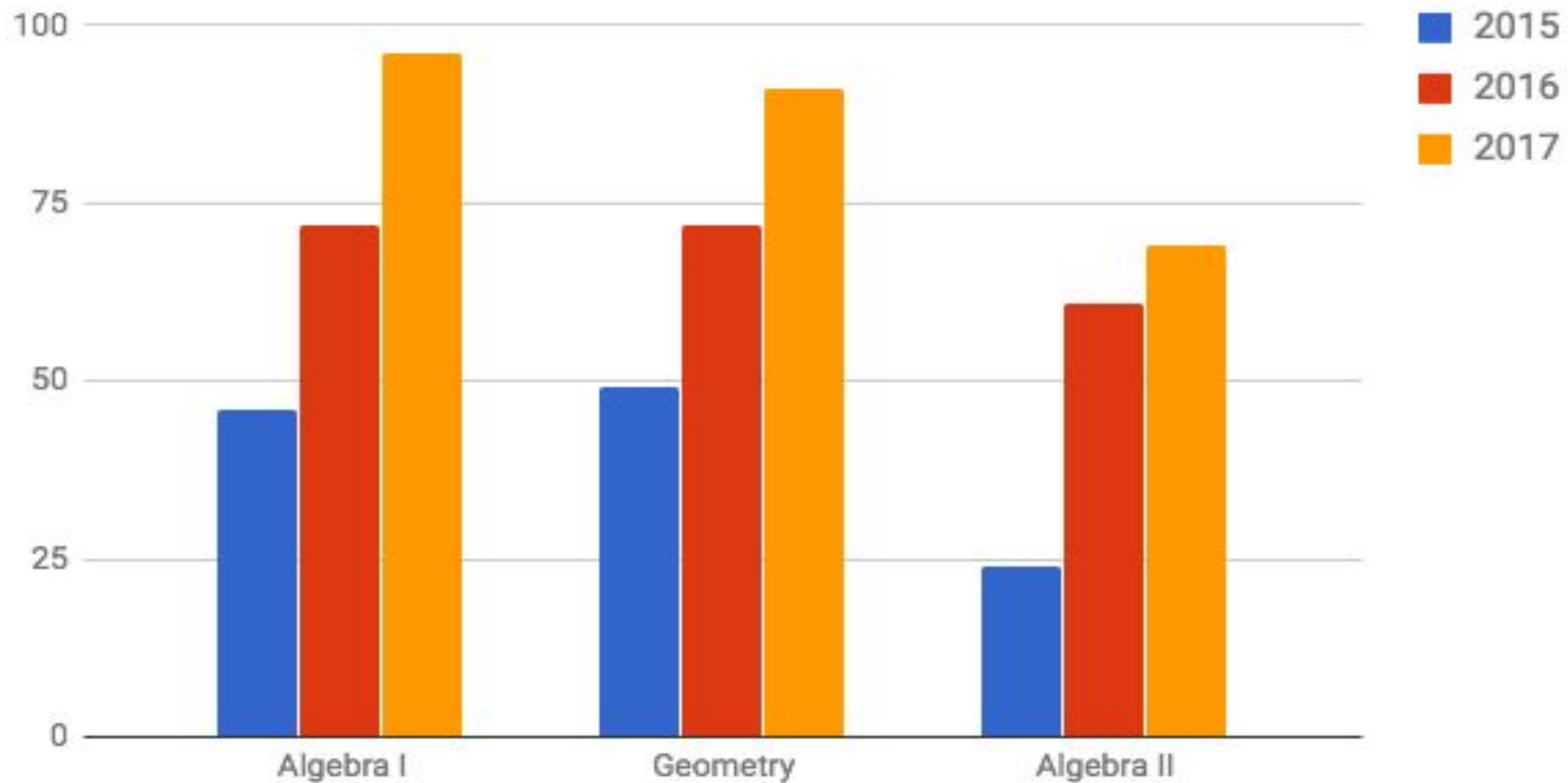
% OF STUDENTS SCORING 4 OR HIGHER (MEETING COLLEGE & CAREER READINESS)



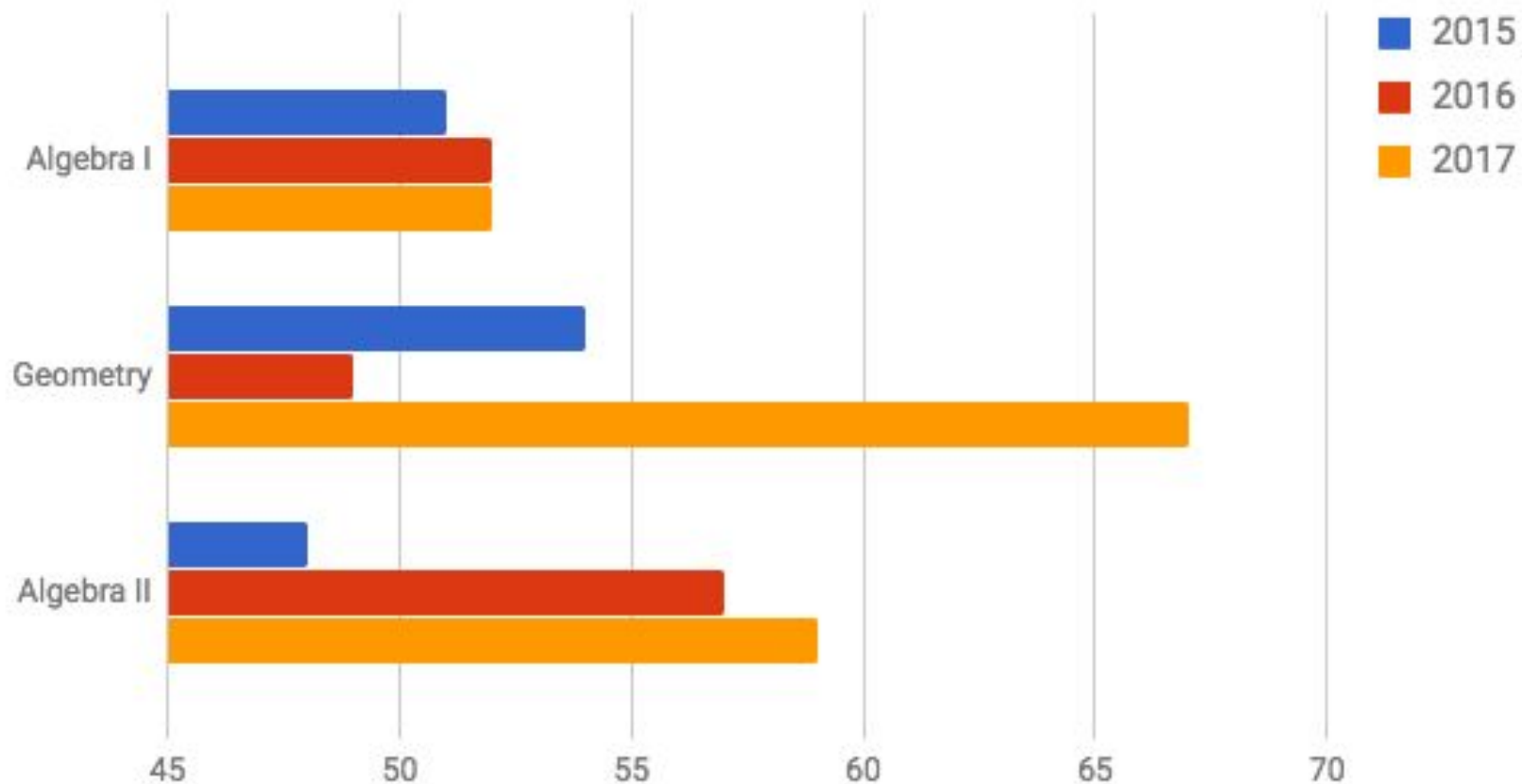
Mathematics

Course	Valid Scores	Avg. Score	Level 1	Level 2	Level 3	Level 4	Level 5	% 4 or Higher
Algebra I	138	745	5.8% (8)	12.3% (17)	30.4% (42)	51.4% (71)	0% (0)	51.4% (71)
Geometry	264	755	0.8% (2)	12.1% (32)	20.5% (54)	58.3% (154)	8.3% (22)	66.7% (176)
Algebra II	192	753	13% (25)	12.5% (24)	15.1% (29)	52.6% (101)	6.8% (13)	59.4% (114)

PARTICIPATION RATE



% OF STUDENTS SCORING 4 OR HIGHER (MEETING COLLEGE AND CAREER READINESS)



D

HS.D.2-2

Solve multi-step contextual problems with degree of difficulty appropriate to the course involving perimeter, area, or volume that require finding an approximate solution to a polynomial equation using numerical/graphical means.

- i.) Tasks may have a real world or mathematical context.
- ii.) Tasks may involve coordinates (G-GPE.7).
- iii.) Refer to A-REI.11 for some of the content knowledge from the previous course relevant to these tasks.
- iv.) Cubic polynomials are limited to polynomials in which linear and quadratic factors are available
- v.) To make the tasks involve strategic use of tools (MP.5), calculation and graphing aids are available but tasks do not prompt the student to use them.

MP.1, MP.4, MP.5

Y

metry

REG H

NORTHERN HIGHLANDS REG
NEW JERSEY

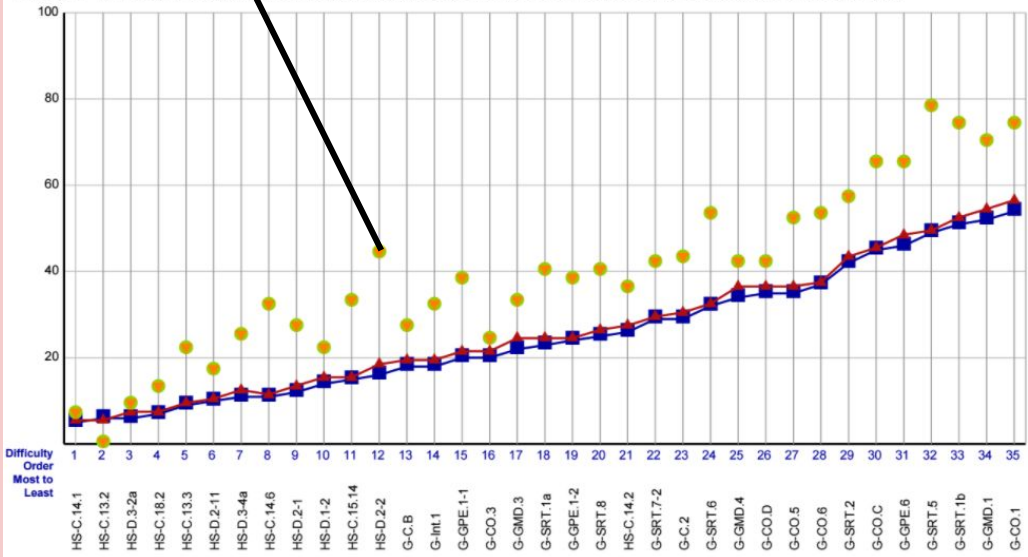


MATHEMATICS Geometry Assessment, Spring 2017

Students with Valid Scores (264)

Purpose: This report presents the average percent correct by Evidence Statement for school, district, state and Cross-State.

- ▲ Cross-State
- State
- District
- ▼ School



PARCC EVIDENCE STATEMENTS

Reading: Literature												Reading: Informational Text														
			Key Ideas & Details			Craft & Structure			Integration of Knowledge & Ideas						Key Ideas & Details			Craft & Structure			Integration of Knowledge & Ideas					
OVERALL			RL.9-10.1 RL.9-10.2 RL.9-10.3			RL.9-10.4 RL.9-10.5 RL.9-10.6			RL.9-10.7 RL.9-10.8 RL.9-10.9			OVERALL			RI.9-10.1 RI.9-10.2 RI.9-10.3			RI.9-10.4 RI.9-10.5 RI.9-10.6			RI.9-10.7 RI.9-10.8 RI.9-10.9					
NJ	ST	PP	NJ	ST	PP	NJ	ST	PP	NJ	ST	PP	NJ	ST	PP	NJ	ST	PP	NJ	ST	PP	NJ	ST	PP	NJ	ST	PP
45	75	32	45	75	32	48	80	10	n/a	n/a	<6	48	89	28	48	89	28	46	86	14	n/a	n/a	<6			
45	59	32	45	59	32	48	60	10	n/a	n/a	<6	48	57	28	48	57	28	46	50	14	n/a	n/a	<6			
45	44	32	45	44	32	48	40	10	n/a	n/a	<6	48	50	28	48	50	28	46	50	14	n/a	n/a	<6			
45	66	32	45	66	32	48	80	10	n/a	n/a	<6	48	82	28	48	82	28	46	100	14	n/a	n/a	<6			
51	84	32	51	84	32	54	70	10	n/a	n/a	<6	43	89	44	43	89	44	49	94	16	n/a	n/a	<6			
45	56	32	45	56	32	48	70	10	n/a	n/a	<6	48	54	28	48	54	28	46	36	14	n/a	n/a	<6			
44	56	32	44	56	32	44	56	18	n/a	n/a	<6	46	55	40	46	55	40	53	71	14	39	33	6			
51	16	32	51	16	32	54	20	10	n/a	n/a	<6	43	14	44	43	14	44	49	13	16	n/a	n/a	<6			
51	63	32	51	63	32	54	40	10	n/a	n/a	<6	43	52	44	43	52	44	49	81	16	n/a	n/a	<6			
45	81	32	45	81	32	48	60	10	n/a	n/a	<6	48	75	28	48	75	28	46	64	14	n/a	n/a	<6			
45	69	32	45	69	32	48	60	10	n/a	n/a	<6	48	89	28	48	89	28	46	93	14	n/a	n/a	<6			
44	59	32	44	59	32	44	67	18	n/a	n/a	<6	46	70	40	46	70	40	53	86	14	39	50	6			
45	66	32	45	66	32	48	60	10	n/a	n/a	<6	48	61	28	48	61	28	46	86	14	n/a	n/a	<6			
51	50	32	51	50	32	54	80	10	n/a	n/a	<6	43	55	44	43	55	44	49	50	16	n/a	n/a	<6			
51	28	32	51	28	32	54	40	10	n/a	n/a	<6	43	48	44	43	48	44	49	44	16	n/a	n/a	<6			
51	59	32	51	59	32	54	40	10	n/a	n/a	<6	43	32	44	43	32	44	49	44	16	n/a	n/a	<6			

CONTENT STANDARDS ROSTER

NJ = State Average Percent Points Achieved
ST = Student Percent Points Achieved
PP = Total Points Possible



NJ Biology Competency Test

2017 Results

NJ BCT Performance

