



Fig. 4-14 Vertical Capital Letters and Numerals

4.8 Vertical Capital Letters. The standard vertical capital alphabet is shown in Fig 4-14. Each letter is shown in a grid 6 units high. You can compare the widths of the letters to the heights by counting the number of squares across each letter. With the exception of the I, which has no width, and the W, which is the widest letter of the alphabet, all letters are either 5 or 6 units wide. You can easily remember which letters are 6 units wide simply by recalling the name TOM Q VAXY, Fig 4-15. Each of the letters in his name is 6 units wide, and all others in the alphabet, except the J and W, are 5 units wide.



Fig. 4-15 Tom Q Vaxy

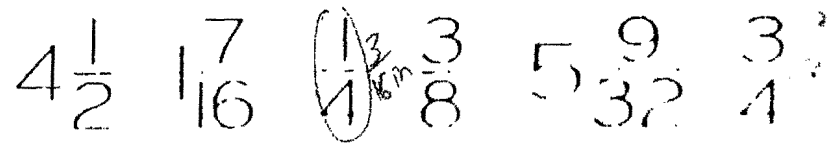


Fig. 4-18 Vertical Numerals and Fractions

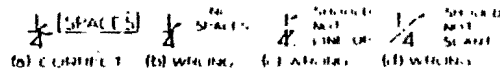


Fig. 4-19 Fractions (Full Size)



Fig. 4-20 Spacing with Bow Dividers (Full Size)

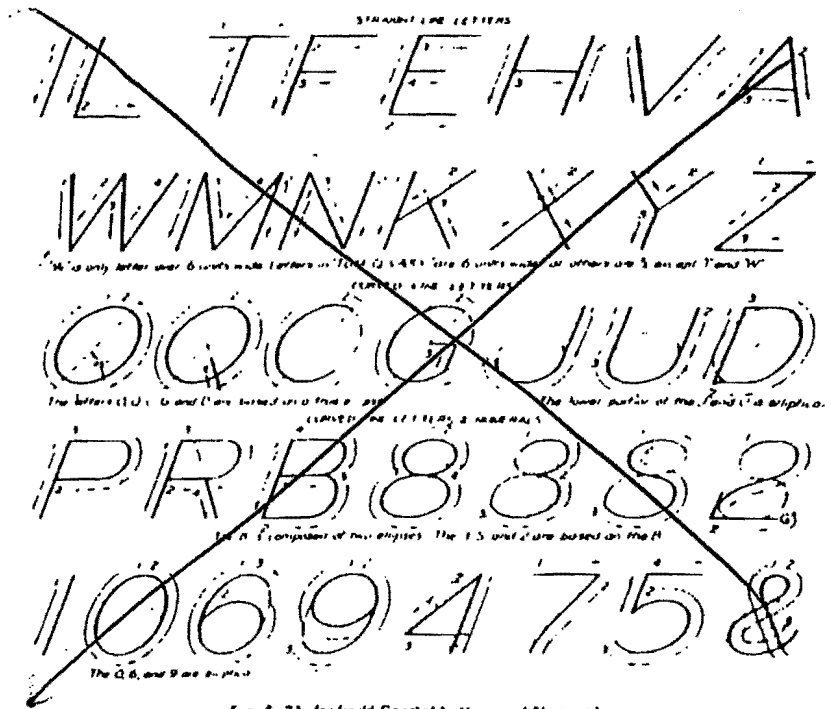


Fig. 4-21 Inclined Capital Letters and Numerals