

DIMENSIONING NOTES:

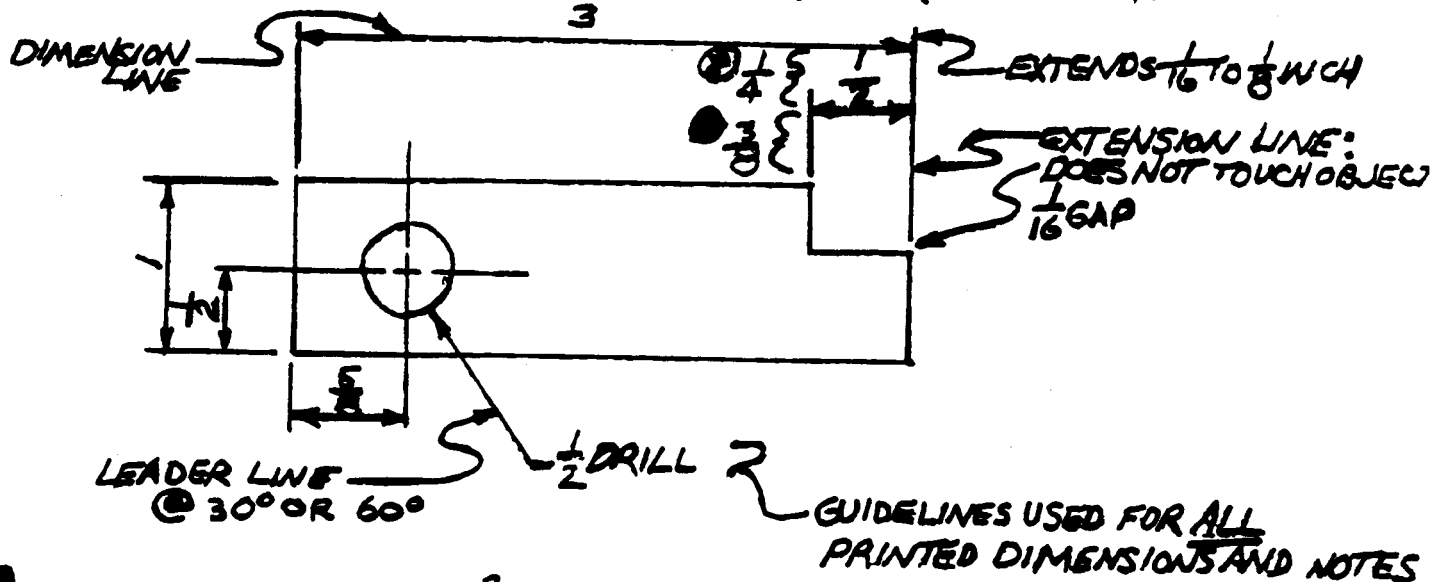
DIMENSIONS ARE USED TO ILLUSTRATE:

1. SIZE 2. SHAPE 3. LOCATION

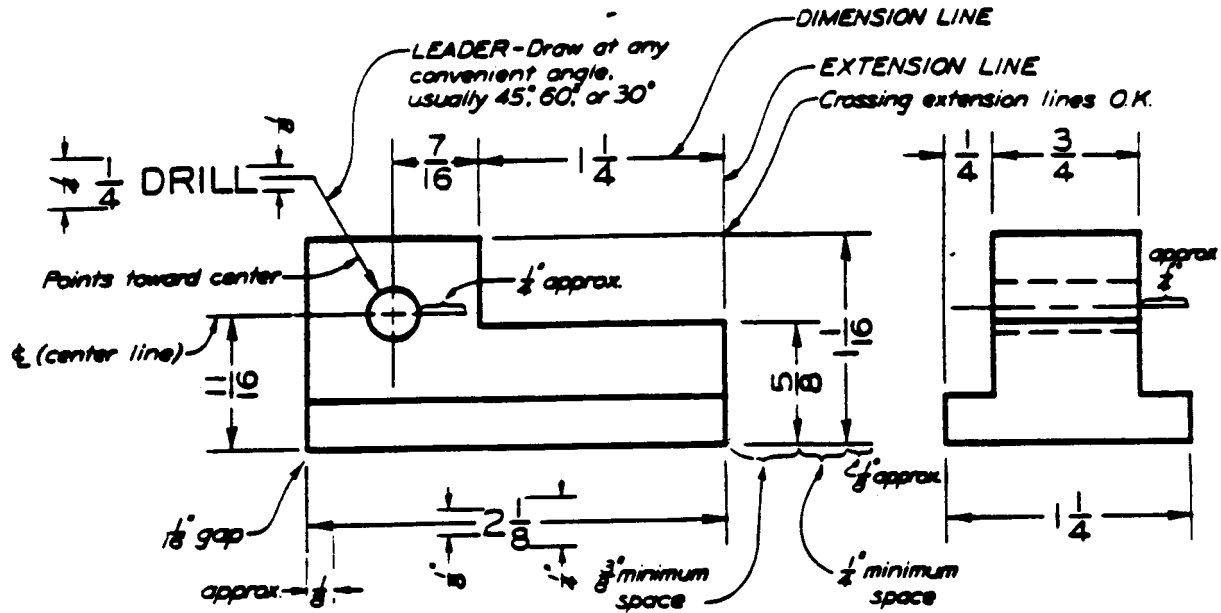
DIMENSION LINE WORK IS DONE IN A 4H PENCIL - SHARP BUT NOT AS DARK AS AN OBJECT LINE.

THE FOLLOWING LINES ARE USED IN DIMENSIONING:

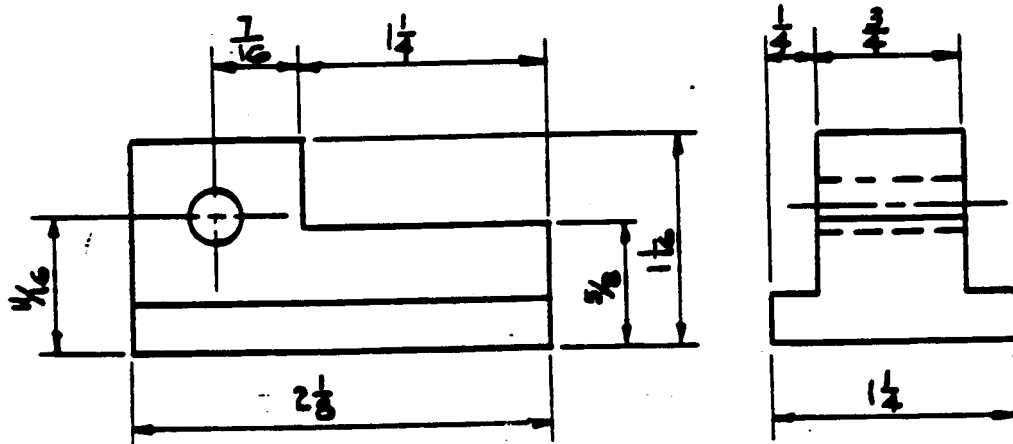
1. EXTENSION 2. DIMENSION 3. LEADER 4. CENTER LINES



- THE FIRST DIMENSION IS $\frac{3}{8}$ AWAY FROM THE OBJECT
- EACH DIMENSION ABOVE THE FIRST IS $\frac{1}{4}$ AWAY FROM THE PREVIOUS ONE
- ALL NUMBERS AND LETTERS ARE PRINTED $\frac{1}{8}$ HIGH IN "2H" LEAD
- ALL FRACTIONS ARE PRINTED $\frac{1}{8}$ HIGH TOTAL
- ALL ARROWS ARE $\frac{3}{8}$ LONG AND SHARP LIKE = $\longrightarrow \odot$
- DIMENSIONS ARE GROUPED TOGETHER AS MUCH AS POSSIBLE AND PRIMARILY BETWEEN THE VIEWS WITH NOTES BEING PLACED OUTSIDE THE VIEWS
- ALL DRAWINGS ARE DIMENSIONED AS RIGHT READING - THAT IS - AS YOU LOOK AT THE FRONT VIEW THE DIMENSIONS ARE READ IN A NORMAL MANNER (SEE FIG. ABOVE NO'S 3, $\frac{1}{2}$, $\frac{5}{8}$, AND DRILL NOTE) DIMENSIONS SUCH AS HEIGHT ARE READ FROM THE RIGHT SIDE OF THE PAPER (SEE FIG. ABOVE NO'S 1 AND $\frac{1}{2}$) THEREFORE IF THE PAPER IS REVOLVED CLOCK WISE THEY ARE READ IN A NORMAL MANNER -
- ALL DIMENSIONS ARE ALWAYS PLACED ABOVE THE DIMENSION LINE
- WHEN DIMENSIONING CYLINDERS STAGGER THE DIMENSIONS TO THE RIGHT AND LEFT OF THE \odot .



Dimensioning Conventions.



FUNCTIONAL DRAFTING

Aligned method